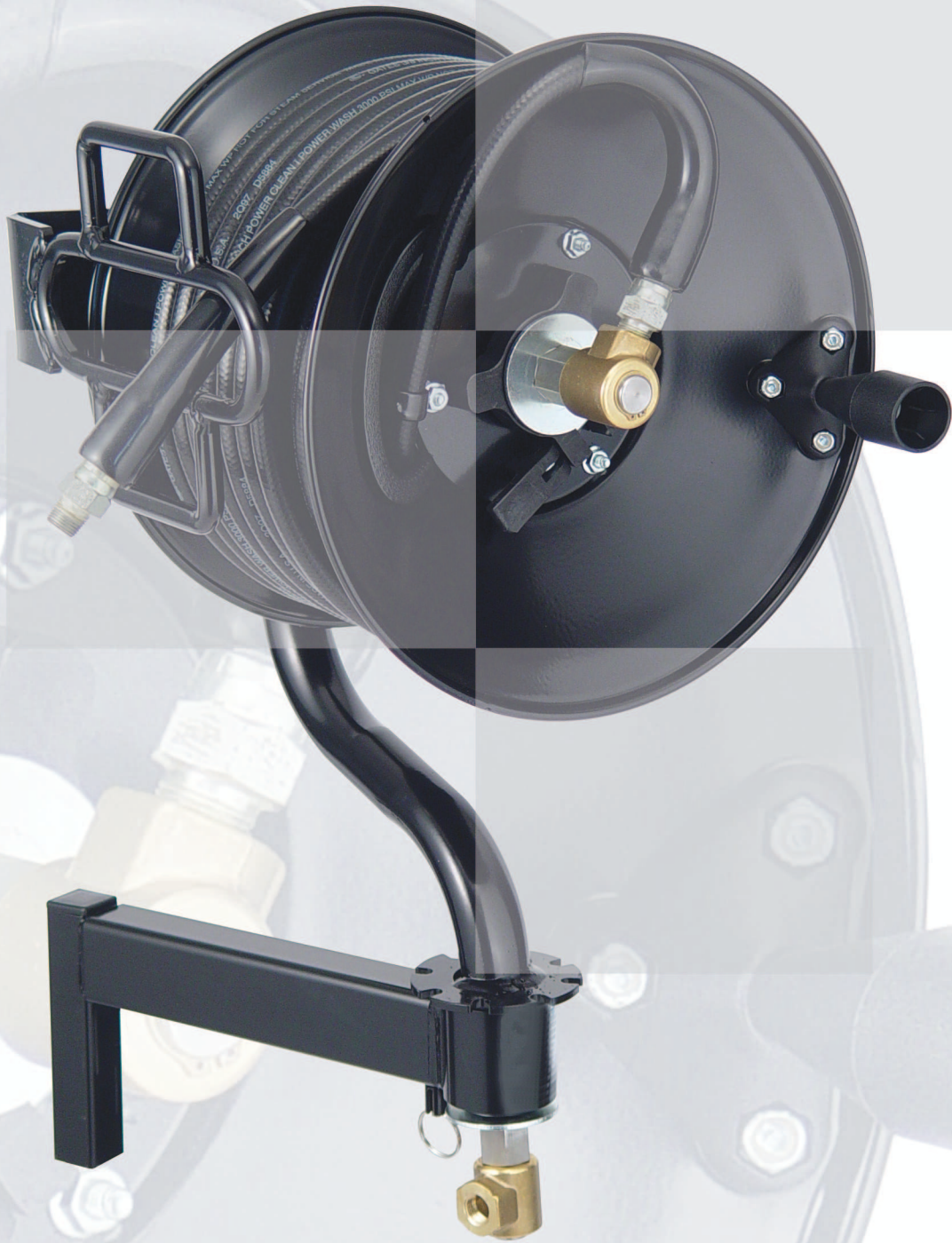


2006 Product Line



Industrial Power Wash Reels

4400

SERIES



Hose not included
Tubular Base sold separately

Non-Pivot Reels

Built to industrial strength standards, the 4400 series bolt-on reels provide years of leak-free operation and exceptional performance under rigorous conditions. Plus, with a variety of mounting options, these are the most versatile hose reels on the market!

Technical Specifications

All 4400 series reels are rated at 5000 PSI and 325° F and have a 2 year warranty.

Model 4413

3/8" Capacity100 ft.
1/2" Capacity75 ft.
Ship Wt.18 lbs.

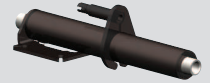
Model 4416

3/8" Capacity200 ft.
1/2" Capacity150 ft.
Ship Wt.22 lbs.

NOTE: Reel capacities may vary depending on hose brand and style.

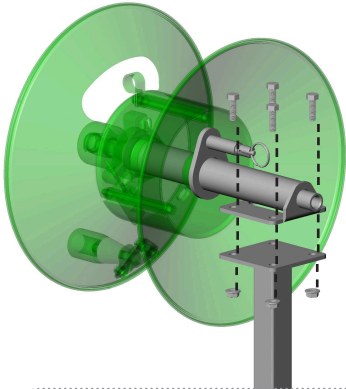
Steel Pipe Axle

Featuring schedule-80 steel pipe within the 1-1/4" tubular axle, this rugged design is ideally suited for industrial applications.



Exclusive Bolt-On Design

Rapid Reel's innovative mounting system allows each 4400 series reel the ability to be bolted to a variety of mounting options with ease. See back page for more details.



STANDARD FEATURES

Continued Next Page

All Metal Construction

High grade flat and tubular metal is formed to precise tolerances for long-lasting results. Rapid Reel hose reels are built for those who appreciate great quality.

Cam-Lever Brake

Keeps the hose from unspooling while reel is in use. Turns off and on with the flick of a finger. Durable material will last a lifetime.



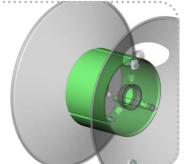
Spring Reel Lock

Located on the back of the reel, this lock keeps the reel from unwinding when not in use. Spring action pin provides easy engagement with simple pull-n'-turn motion.



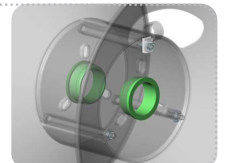
Solid Surface Drum

An all metal drum provides a smooth, circular surface for the hose to wrap around. Having no sharp corners, bends or openings extends hose life.



Smooth Spin Bushings

Pressed between the reel and axle, these durable, long-life bushings will keep the reel spinning smoothly for years. Completely maintenance-free.



5500

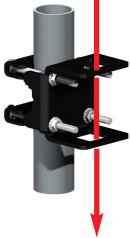
SERIES



Hose not included.

Model 5513

Patented 360° Pivot Design!



Patented Quick-Attach Socket Feature

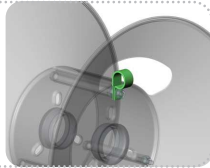
Allows reel to be mounted to, (or removed from), walls or portable pressure washer frames in just seconds! Rapid Reel's mounting brackets enable quick installation to the frames of most major pressure washer brands. See back page for more details.

STANDARD FEATURES

Continued From Previous Page

Loop-n'-Clamp Design

Our innovative method of securing the hose to the reel extends the life of both the hose and reel by protecting the swivel and hose fittings from hard pulls.



Comfort Grip Handle

Riding on a solid steel shaft, this free spinning handle makes rewinding the reel easy. Made from high-strength material, this full-palm handle is virtually unbreakable.



Weather Resistance

With special agents for extreme durability and weather resistance, our powder-coat paint creates a hard, smooth finish that stays attractive for years.

360° Pivot Reels

Offering nine exclusive features, this is the reel that revolutionized the pressure washer industry! Its patented design allows the reel to be attached, or detached, from a wall or pressure washer frame in just seconds. It also delivers a full 360° pivoting action...keeping the reel in constant alignment with the hose.

Technical Specifications

All reels are rated at 5000 PSI and 325° F and have a 2 year warranty

Model 5513

3/8" Capacity100 ft.
1/2" Capacity75 ft.
Ship Wt.33 lbs.

Model 5516

3/8" Capacity200 ft.
1/2" Capacity150 ft.
Ship Wt.35 lbs.

NOTE: Reel capacities may vary depending on hose brand and style.

Hose Guide

Made for left or right-hand operation, the "flip-over" hose guide assists in pulling hose out and reeling it back. Keeps hands clean and injury free.



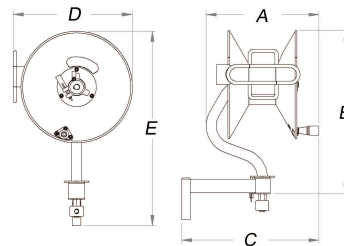
360° Pivot Lock

Locks reel in one of eight positions to keep it from pivoting while rewinding or in transport. Spring-action pin provides easy engagement with simple pull-n'-turn motion.



Steel Pipe Axle

Featuring a schedule-80 steel pipe within the curved 1-1/4" tubular axle, this design is ideally suited for high pressure, high temperatures and 360° pivoting action.



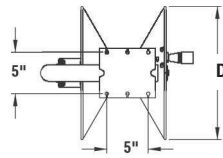
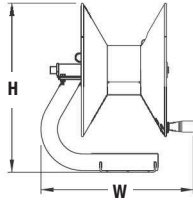
Dimensions

	5513	5516
A	16"	16-3/4"
B	22-5/8"	24-3/8"
C	19-5/8"	20-1/2"
D	13-7/8"	17-1/4"
E	26-1/2"	28-1/8"

"Bolt-On" Brackets for 4400 Series Reels

Tubular Base Mounting

In one word...RUGGED! Rapid Reel engineers have incorporated one of the strongest natural designs known to man...the circle...to create a uniquely durable and versatile mounting base. Made from high grade 1-3/4" tubular steel, this base can easily mount to any solid wall or flat surface. The strength of its design makes it an ideal fit for demanding conditions such as trailers, flatbeds or other vehicle mount applications.



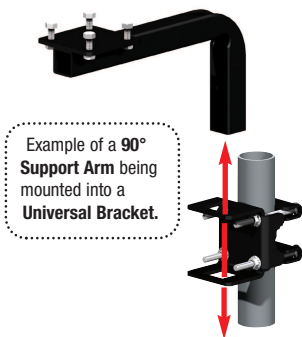
Model	H	W	D
4413	18-5/8"	17-7/8"	13-1/8"
4416	20-3/8"	18-7/16"	16-1/8"



Tubular base shown with model 4413

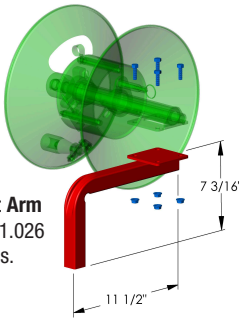
Support Arm Mountings

Mounting a 4000 Series hose reel to the frame of a portable pressure washer is an easy process. Select one of these three support arms to attach to the reel. The reel/arm combo then slides into the bracket's receiving socket with ease.

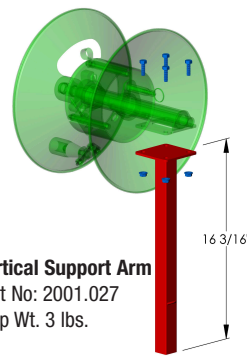


Example of a 90° Support Arm being mounted into a Universal Bracket.

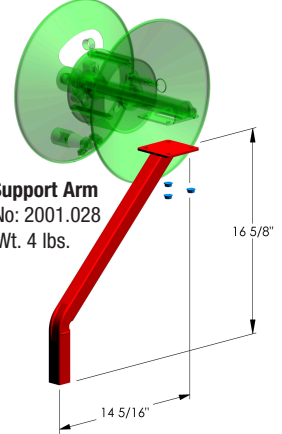
90° Support Arm
Part No: 2001.026
Ship Wt. 3 lbs.



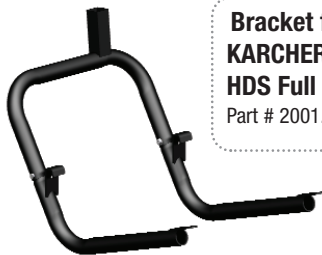
Vertical Support Arm
Part No: 2001.027
Ship Wt. 3 lbs.



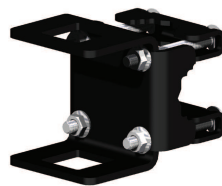
45° Support Arm
Part No: 2001.028
Ship Wt. 4 lbs.



"Socket" Brackets for High Pressure Reels

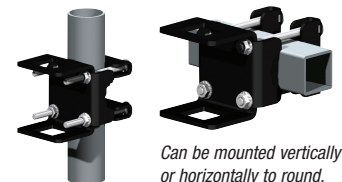


Bracket for
KARCHER®
HDS Full Size
Part # 2001.090



Universal Bracket

(Part # 2001.100)
Clamps onto vertical or horizontal round pipe, square tubing, or angle iron...up to 1-3/4" in size.



Can be mounted vertically or horizontally to round, square or angle iron.



Bracket for
LANDI® PHW
and MI-T-M®
HHP Washers
Part # 2001.006



Wall Bracket

(Part # 2001.003)
For mounting 5500 reels to solid walls.

